



Interim pricing with effect from  
18th March 2024

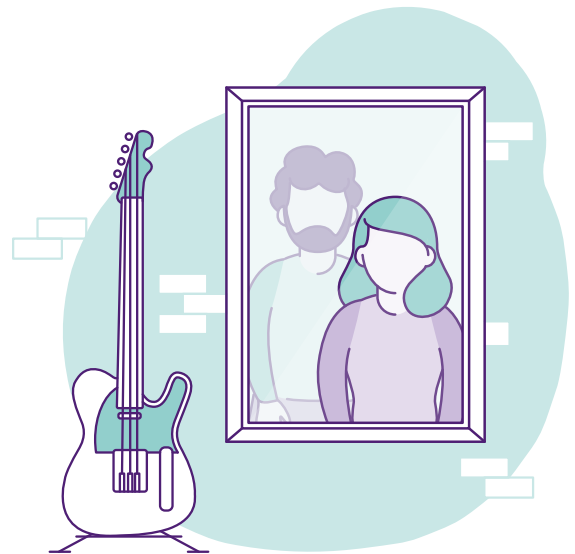
“Human beings must be said goodbye to with dignity even when it has to be swift and with very few people there.”

JUSTIN WELBY, ARCHBISHOP OF CANTERBURY, EASTER 2020

We encourage you to arrange for a date that is within 14 days from death occurring where possible.

It is our policy to require a deposit payment which is made up of the disbursement costs (see below for detail) and 50% of our own fee, to be paid at least 48 hours in advance of the funeral.

Our terms and conditions of business can be found at:  
[www.cpjfield.co.uk/terms-and-conditions](http://www.cpjfield.co.uk/terms-and-conditions).



### Our professional service charge (which includes):

- Meeting to make funeral arrangements over the phone, by video call or in person.
- Liaising with a celebrant (religious or non-religious) who is to lead the funeral ceremony and will also contact you to agree the form and content of the service.
- Advice on registering the death with the registrar.
- Advice and assistance in completing burial or cremation applications and digital submission to the Burial or Cremation Authority.
- Liaising with Hospitals, Doctors or HM Coroner as required by the circumstances.
- Booking the service time with the venue, ordering music and submitting other items for the funeral (ie at a crematorium this might include a video tribute, request for live streaming service, photos for display screens and so on).
- A condolences page on our website with an obituary for the person who has died where friends and family may post messages of comfort and support. In memory donations to a charity of your choice can also be left here. We recommend that the date, time and location of the funeral is shared using this service.
- Placing a notice of death in local and national newspapers on your behalf (at your cost). We recommend that details of the condolence page on our website are included.
- Liaising with florists for the delivery of tributes on the day of the funeral ceremony.
- Attendance of a funeral director to conduct the funeral and sufficient funeral service team members at the graveside or crematorium chapel before the service.
- Collect the ashes from the crematorium (as applicable) and return to the funeral home for storage of up to three months until further arrangements can be made.

**£1,461**

---

## Care, preparation and presentation of the person who died

- Provision of mortuary care by experienced and qualified members of our funeral service team from arrival at our mortuary facility for up to 14 days after arrival.
- Wash and dress the deceased person in clothes provided to us or in the selected robe or gown.
- Embalming is provided only with express consent and where the embalmer is an employee of CPJ Field & Co. there is no charge for their services.
- Facilitating a visit to the funeral home to see the deceased person in our visiting room.

**£809**

---

## Collection of the deceased person

- Attendance of our funeral service team (usually a minimum of two people although this may vary according to the situation or circumstances) to prepare for the deceased person to be transferred from the place of death.
- Conveyance of the person who died to a mortuary facility at a nearby CPJ Field funeral home.
- For collections from locations that are more than 15 miles from our nearest funeral home additional mileage charges will apply.

**£475**

---

The provision of a hearse from our funeral home to the venue for the funeral ceremony (via a route of your choosing)\*

- For funerals held at a venue that is more than 20 miles from our funeral home, additional mileage charges will apply

**£595**

---

## Total funeral charge (excluding coffin)

**£3,340**

---

- Embalming surcharge (where provided by an embalmer not directly employed by CPJ Field & Co. Ltd). **£208**
  - Daily charge for continuing care for the person who died beyond 14 days **£20**
  - The provision of a limousine to transport a maximum of six mourners to the funeral and back again (via a reception if required). **£298**
  - The use of our service chapel (where available) for a ceremony prior to taking the coffin to be buried or cremated.\* **£185**
- 

## Design and print service sheets for the ceremony

Copies	50	100	150
4 pages	£112	£154	£196
8 pages	£147	£202	£259

---

It will be necessary to choose a coffin from the list of traditional coffins below (or one of our alternative construction coffins which include willow, seagrass and so on) to complete the funeral arrangement.

---

- Surcharge for a funeral ceremony arranged to take place at the weekend. **£742**
  - Remove and replace a memorial stone to allow for a further burial. **£POA**
  - Monthly storage fee for ashes beyond the three months allowed for in our professional fee. **£30**
- 

\*Where limosines are provided for a funeral ceremony followed by a committal two hours or more after the start, an additional charge of £258

\*Alternative hearses (horse drawn, vintage car, motorcycle, lorry etc) are available on request.

NB – Where a double funeral is arranged only 50% of our professional fee will be charged for the second deceased person.

Where the balance of the funeral account is paid direct by a bank or solicitor we will refund the deposit (to the individual who paid it) and no surcharge will be applied to the account.

---

## Coffins

A wide range of traditional bespoke coffins are available:

### The Islay

A real oak veneered coffin with flat sides and flat lid fitted with six electroplated brass effect fleur-de-lis handles and plate.

Available in a variety of colour finishes.

£457

### The Brighton

A solid European pine coffin with plain sides and flat lid.

Finished with a water-based natural polish for a matt appearance. Furnished with six solid pine wood handles.

£896

### The Oakham

A solid oak coffin with simple plain sides and flat lid. Fitted with deep solid wood moulds to the base and lid. This coffin is polished to a high gloss finish.

£1,371

### The Ascot

A solid oak coffin with simple plain sides, a raised lid and deep moulds to the base. This coffin is polished to a high gloss finish and furnished with six brass coloured bar handles on the sides and one each on both the head and the foot ends of the coffin.

Available in a variety of colour finishes.

£1,619

### The Barnard

A solid oak coffin with feature deep panels to the sides and ends. This coffin has a high raised lid and is polished to a rich gloss finish. Fitted with six brass coloured bar handles on the side and one on both the head and the foot ends of the coffin.

Available in a variety of colour finishes.

£1,472

A wide range of willow, wool, bamboo, Daisy and American style caskets are also available.

---

It is our policy to ask for all of the disbursements (see below for detail) and 50% our fee for a no-ceremony funeral to be paid at least 48 hours before the the service is provided.

---

## Funeral with no ceremony (similar to the service known as Direct Cremation)

- Organised within 7–10 days of death occurring (registration and paperwork permitting).
- Arrangements made over the phone, by video call or in person.
- Advice on registering the death with the registrar over the phone or registering the death for you.
- Advice and assistance in completing burial or cremation applications and digital submission to the Burial or Cremation Authority.
- Liaising with Hospitals, Doctors or HM Coroner as required by the circumstances.
- Collection of the deceased person from the place of death to a mortuary (most frequently this will be our own mortuary. Should the need arise, we may use alternative mortuary provision for a short period).
- Care, preparation and presentation of the person who died.
- Provision of mortuary care by experienced and qualified members of our funeral service team from arrival at our mortuary facility for up to 14 days after arrival.
- Wash and dress the deceased person in a suitable gown.
- A condolences page on our website with an obituary for the person who has died where friends and family may post messages of comfort and support. In memory donations to a charity of your choice can also be left here.
- Transport for the coffin to the cemetery or crematorium.
- Attendance of a funeral director to conduct the funeral and sufficient funeral service team members at the graveside or crematorium chapel before the service.
- Facilitating a visit to the funeral home to see the deceased person in our visiting room.
- Basic coffin suitable for cremation.

### Does not include:

- Any ceremony immediately before or after the coffin is presented for burial or cremation.
- The attendance of a celebrant (religious or non-religious) at the place of committal.
- Choice of coffin (coffin can be upgraded at additional cost).
- Choice of date and time for the cremation or burial to happen.
- Mourners attending the place of committal.

**£2,538**

---

NB: this is a fixed-price service. You may choose to hold a service of remembrance and thanksgiving or a celebration of life ceremony at a later date. There will be no ceremony on the day the service is provided.

With your permission we will make a diary note to contact you three months after the funeral to offer our assistance in arranging such a ceremony or service.

We offer a significant range of keepsakes and memorial jewellery that incorporate or store ashes.

### **Third party fees**

These consist of monies paid out by us on your behalf to secure the services of others in order to carry out the funeral in accordance with your wishes. These are often referred to as 'disbursements'.

These may include:

- Burial authority fees
- Cremation authority fees
- Churchyard burial fees
- Celebrant (religious or non-religious) fees
- Doctors' fees

Please consider settling your account by BACS or by credit card online via our website.

---

For further information or guidance please visit [www.cpjfield.co.uk](http://www.cpjfield.co.uk) or call 01444 230 430.

It's our job to walk beside people as they make their way through this part of their grief. We won't stop looking for ways in which we can continue to do this. In whatever form that takes we'll always give it our all.

Care for the living and the dead

*Because every life is unique*