

A PRACTICAL GUIDE

Our funeral services options and prices



C.P.J. Field.

More than a funeral director since 1690.

Our Philosophy

As a family business we understand that bereavement can be ever so tough – especially when you're alone. We'll be by your side every step of the way. Looking after your loved one as if they were one of our own, helping you celebrate the unique life they lived, being there when you need us. Caring for the living is who we are and what we do.

It is our job to walk beside those who are going through a difficult time and those who are experiencing the unpredictable and unexpected nature of grief.

We won't stop looking for ways in which we can continue to do this, and to strive to be the very best at what we do.



Contents

- | | | | | | |
|---|------------------------------|----|---------------------------------------|----|-------------------|
| 3 | Pre-planning | 10 | Why do we visit someone who has died? | 21 | Never Alone |
| 4 | Types of funerals | 12 | What do our funerals include? | 22 | Our online portal |
| 5 | Tailored funerals | 14 | Things to consider | 23 | About CPJ Field |
| 6 | A full-service funeral | 16 | The coffin | | |
| 7 | A funeral without a ceremony | 17 | Homeland International | | |
| 8 | A country funeral | 18 | After the funeral | | |
| 9 | Sustainable funerals | 20 | Your relationship with us | | |

Pre-planning

Having to think about your own funeral arrangements can be an uncomfortable thing to do, but thoughtful pre-planning can secure not only your own peace of mind but also the comfort and reassurance that your family will be spared the extra burden at such an emotional and distressing time.

We're delighted that our plan partner Golden Leaves have achieved authorised provider status with the FCA and CPJ Field & Co are registered as authorised representatives of Golden Leaves for the purposes of selling funeral plans.

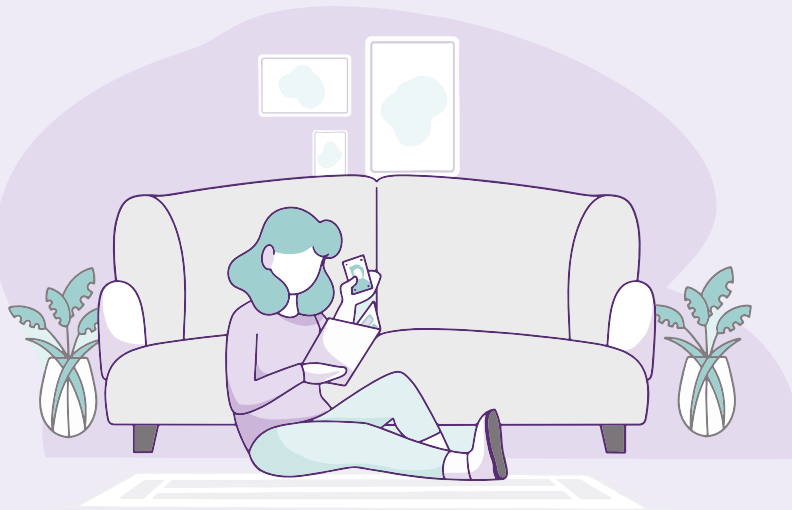
For more information or to get started on pre-planning, please visit www.cpjfield.co.uk/funeral-planning/funeral-plans



TYPES OF FUNERAL

There are many types of funeral. Some people choose a small gathering at home, others prefer a grand affair.

Funeral types range from cremations to burials, and from eco-friendly to at-home funerals.



Why do we have funerals?

Funerals provide us with the opportunity to gather and support those who experience loss, to share memories and stories with fellow mourners, while saying goodbye to a person we love and will miss. In this way, we help each other have the chance of the best start possible to a new life without that person in it.

Funerals are about the person who has died and for the people grieving their death.



Tailored Funerals

We tailor all our funerals to meet the exact wishes of the individual and the family. We arrange cremations, which have become very popular in recent times, and we plan both religious and non-religious cremations, designed to be bespoke, to suit all. We also arrange burials at local cemeteries.

Both cremations and burials can begin with a separate service elsewhere, which can be held in a place of worship or another venue separate from the crematorium or place of burial.

Just as each person is unique, our funerals are planned to be equally unique to suit your family's wishes. Many families no longer want a traditional funeral service and instead want a service that is personalised, reflects their loved one, and celebrates a life that has been lived.

We can help you to arrange a reception wherever you wish.



A full-service funeral

A funeral with a ceremony brings family and friends together to support one another, share memories, and say goodbye in a way that's deeply personal.

Your Funeral Director will ensure everything runs smoothly, from selecting a date, coffin, and hearse to arranging transport, flowers, music, readings, and who leads the service, whether religious or not.

Ceremonies can take place at a crematorium, church, or another meaningful location, followed by committal at a cemetery or crematorium.

We can also help arrange a reception, a chance to gather, reflect, and remember together.



A funeral without a ceremony

Not every goodbye needs a formal service, but it's still significant.

A no ceremony funeral includes the same level of care, professional preparation, a chosen coffin, and support with paperwork. Your Funeral Director will accompany your loved one to the place of committal without family or friends in attendance.

If you wish, we can help plan a memorial or tribute later, offering space to honour and remember.

This option is just as personal and dignified as a full service funeral.



A country funeral at CPJ Field

A funeral can take place somewhere peaceful and personal, beyond traditional venues.

With a country funeral, you can hold a private ceremony in the countryside, followed by a relaxed reception with food and time to be together.

Afterwards, your Funeral Director will take the coffin to a nearby crematorium. You're welcome to join or stay with your guests while we carry out the committal for you.

Speak to us if a country funeral feels right, we'd be honoured to help.



Sustainable funerals at CPJ Field

Like many of our clients, we take environmental responsibility seriously. We can advise on the most environmentally friendly approach to every aspect of our services. Here are just a few things we can do to make your service greener.

- We offer natural living memorials.
- Our coffins are all sourced from wood that's been accredited by the Forestry Stewardship Council, and are made using a carbon neutral process.
- Flowers are sourced from local florists, all of whom use environmentally-friendly growing methods and packaging wherever possible.
- Any CO₂ emissions created by our standard funeral service can be offset by making a £25 donation to Groundwork UK. We'll be happy to arrange for a donation to be made on your behalf.
- Our electric hearse can be used at any service and is available for use throughout CPJ Field.

For more on how to make a funeral greener by understanding its environmental impact, visit greenergoodbyes.co.uk



This image is of Pangdean Barn, Brighton

Why do we visit someone who has died?

Starting the journey to understanding what life is going to be like without the person who has died is, in many ways, the most important function of a funeral.

A key initial step on that journey is the experience gained from visiting the person who has died. This is possibly one of the hardest decisions to be made, yet we believe it is worthwhile because visiting the deceased person can help to make the connection between the person that was and the body they have left behind.

You can make a private appointment to come in to the funeral home, or you can arrange for friends and family to be present at the same time. We find that the community which your friends and family bring is an important source of support and comfort for those in grief.

The sharing of stories, memories and maybe even a bite to eat can have a positive effect on the early days of a bereavement.

Contact us to discuss setting up your funeral home visits.



What do our funerals include?

Our funerals are arranged and carried out by our team of caring, trained funeral professionals from each of our funeral homes. Using their extensive knowledge and expertise, they will guide you through the planning of your funeral arrangements from registering a death and booking venues to organising a condolence page and collating charitable donations.

The provision of written estimates and final accounts is supplied from within a client portal on our website for easy access and agreement.



- | | |
|---|--|
| ✓ Tailored ceremony | ✓ Attendance of family and friends |
| ✓ Condolence page for friends and family to leave messages of support | ✓ Choice of time and date for funeral to take place |
| ✓ Family transportation to funeral | ✓ Mortuary care |
| ✓ Music and visual tributes | ✓ Floral tributes |
| ✓ Condolence page to share memories and charitable donations online | ✓ Advice and guidance |
| ✓ Embalming | ✓ Visits to our funeral home chapel of rest or visiting room |
| ✓ Choice of coffin | ✓ Celebrant or Religious service |
| ✓ Stationery and order of service | ✓ Never Alone aftercare support and community network |

For a full price list and details of the fees for the services we provide, see full price list on page 24.

THINGS TO CONSIDER



The coffin

A small selection of the wide variety available:

The Islay

A real oak veneered coffin with flat sides and flat lid, fitted with six electroplated brass effect handles and plate. Available in a variety of colour finishes. **£454**

The Brighton

A solid European pine coffin with plain sides and flat lid, finished with a water-based natural polish for a matt appearance. Furnished with four solid pinewood handles. **£1,195**

The Oakham

A solid oak coffin with simple plain sides and flat lid, fitted with deep solid wood moulds to the base and lid. This coffin is polished to a high gloss finish and is available in a variety of colour finishes. **£1,324**

The Ascot

A solid oak coffin with simple plain sides, a raised lid and deep moulds to the base. This coffin is polished to a high gloss finish and furnished with six brass coloured bar handles on the sides and one each on both the head and the foot ends of the coffin. Available in a variety of colour finishes. **£1,489**

The Barnard

A solid oak coffin with feature deep panels to the sides and ends. This coffin has a high raised lid and is polished to a rich gloss finish, fitted with six brass coloured bar handles on the side and one on both the head and the foot ends of the coffin. Available in a variety of colour finishes. **£1,389**

A wide range of willow, wool, bamboo and American-style caskets are available.



The Islay

The Brighton



The Ascot

The Oakham



The Barnard



For more options, please see Our Coffin Selection brochure on our website:
www.cpjfield.co.uk/things-to-consider/coffins-and-caskets

Homeland International by CPJ Field & Co: Specialist repatriation services

When someone we love dies overseas, our first thought is, how do we bring them home? That's why we have a specialist repatriation division, Homeland International, who can also support with the repatriation of remains from the UK to anywhere in the world. Our team is on hand 24 hours a day, 7 days a week, to guide you in the repatriation arrangements for your loved one. Costs vary depending on flights and embassy charges, but our team is more than happy to provide an estimate at any time.

We can also help with the transportation of ashes all over the world. There are many reasons why you may wish to transport ashes overseas. Sometimes repatriation is not possible or the option of holding cremation first and looking to return your loved one's ashes home afterwards is preferred. We can arrange the transportation of ashes anywhere worldwide, to airports, funeral homes, or private address.

Contact

For more information on our specialist repatriation services, please visit our website: homeland-international.co.uk or speak to a member of our team at: support@homeland-international.co.uk or +44 03300 417 265.



AFTER THE FUNERAL

Once a funeral has taken place, there may be some arrangements that might need considering.

It can be a great comfort to organise a memorial as a place to visit or some other meaningful idea that will serve as a means to remember someone close to you who has died.

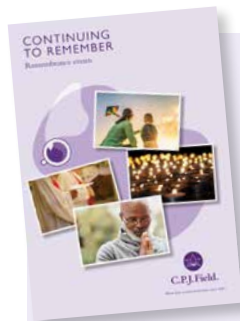
We can help you to organise an ashes burial or scattering ceremony afterwards.

After a direct cremation or a funeral with no ceremony, you may consider organising a celebration of life ceremony or a service of remembrance and thanksgiving at a later date.

There will be no ceremony on the day the service is provided.

When a local no-ceremony funeral is chosen and you ask us to collect the ashes from the crematorium on your behalf we will contact you to let you know they are back with us.

We will take that opportunity to share with you information on what to do next.



Please see our **Continuing to Remember** brochure on our website for a wide range of ideas of what you might do with the ashes after a cremation.

With your permission we will make a diary note to contact you three months after the funeral to offer our assistance in arranging such a ceremony or service.



HEADSTONES, CREMATION PLAQUES AND TABLETS

Headstones and stonemasonry represent timeless traditions that have been present throughout our time as funeral directors.

Like all our services, every aspect of our headstones, cremation plaques and tablets can be personalised. You can choose from a range of stonemasonry ideas, colours, and finishes. We'll even help you with the all-important message.

See our separate brochure for more details.

MEMORIAL JEWELLERY

We offer a significant range of keepsakes and memorial jewellery that incorporate or store ashes. See our separate brochure for more details.

'See You' memorial jewellery



'Ashes into glass' memorial jewellery



Your relationship with us

As a tenth generation family-run funeral directors, each day we support bereaved families, and we know that it is not just the day of the funeral which matters.



Never Alone™

From C.P.J. Field

There can be an emptiness felt when a person you love dies, and the act of grieving can be isolating as others can feel uncomfortable, not knowing what to say and even avoiding a bereaved person when they most need support.

CPJ Field offers further support after a funeral to help fill this gap. Coordinated by our Community Champions, and first established in 2018, CPJ Field's Never Alone™ is a free community-based scheme, run from our vibrant Funeral Homes and other community venues in the areas which we serve, designed to give families support via a range of activities and events which help to reduce grief and assist with improving physical and mental well-being. Social connections are the key to our happiness and encouraging connections through coffee mornings, sponsored walks, days out, sports groups, fitness groups, grief counselling, and other mental health support are all aspects of our Never Alone programme.

For more information on our activities, please ask a member of the team or visit our website: www.never-alone.co.uk



OUR ONLINE PORTAL

Helping to manage your funeral online

Our client portal gives you the ability to publish the details of the funeral onto our website as well as collecting online donations and condolence messages. You can also:

- Personalise the page with photographs and wording about the person who has died
- Approve messages of condolence left by your friends and family
- An area for family and friends to leave photos, memories and messages
- View 'live' estimate online
- Light a candle in memory
- Share funeral service information, if desired, via your social media account, for example WhatsApp
- View the funeral costs including disbursements
- Pay deposit / final account online
- Make a debit / credit card payment

Useful information for Windows
For information and family resources on Windows and its surrounding sites.

[View Local Information](#)

[Write a Condolence Message](#) | [Funeral Registration](#)

FUNERAL ATTENDANCE REGISTRATION

Your name *

Relationship (optional)

Representing (optional)

[Submit](#)

[Write a Condolence Message](#) | [Funeral Registration](#)

WRITE A CONDOLENCE MESSAGE

Your name

Your email

Your message

Include a picture

[Choose File](#)

JPG and PNG image formats are supported. Please file size 1MB.

Light a candle

Four icons representing different ways to light a candle: a candle, a flame, a flame, and a flame.



We are the Field family of CPJ Field, a leading family-run funeral service provider which operates funeral homes across South East England.

All of our funeral homes operate under their original names and have a long heritage to draw on. Our family includes:

Attree & Kent, Ballard & Shortall, Christopher Stringer, Constable & Toop, Cooper & Son, Deric-Scott, Edmund & Sons, Fuller & Scott, Haine & Son, Heritage & Sons, S.E. Skinner & Sons, Shires

Over the past three centuries, CPJ Field has been actively owned and managed by the Field family through ten generations. It is our solemn promise to help you to make your funeral experience as personal and individual as possible.

Jeremy, Emily, Charlie



C.P.J. Field.

More than a funeral director since 1690.



C.P.J. Field.

More than a funeral director since 1690.

