

OUR MEMORIAL AND  
KEEPSAKE COLLECTION

# CONTINUING TO REMEMBER

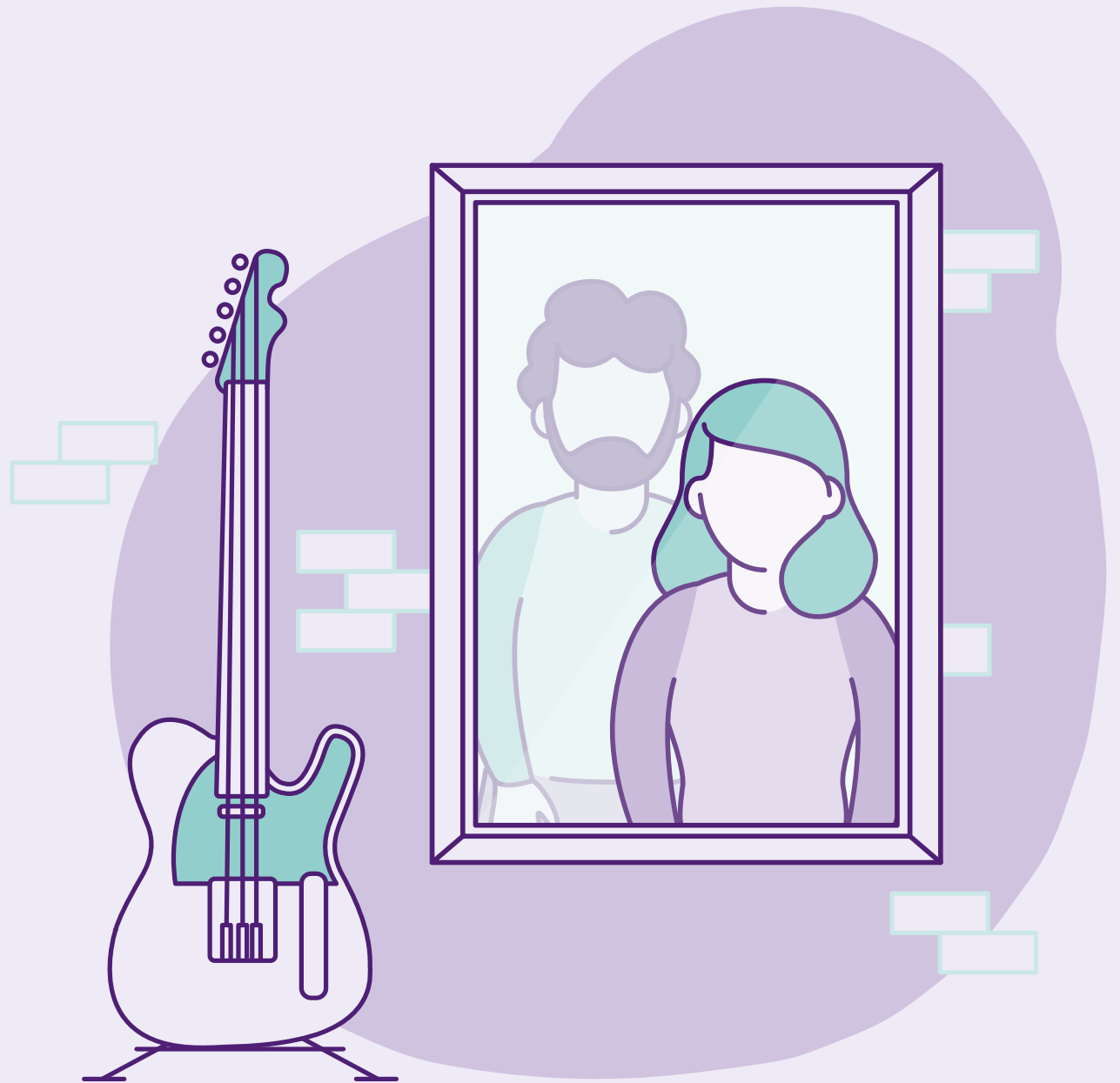
---

2021



C.P.J. Field.

More than a funeral director since 1690.



Care for the living and the dead

# ASHES INTO GLASS JEWELLERY

---

Ashes to Glass use traditional methods combined with their own patented process to create beautiful ashes jewellery as a lasting tribute to the one you hold dear.

These are just a selection of the keepsakes available.

The Ashes into Glass Cufflinks in blue are set in sterling silver.

## CUFFLINKS



## LONG PENDANT



The Ashes into Glass Long Pendant in green is set in sterling silver.

The Ashes into Glass Tribute Ring with purple stone is set in sterling silver.

## TRIBUTE RING



# THE LIFE EXPRESSIONS

---

Unique fingerprint jewellery.

These are just a selection of the keepsakes available.

## TREE OF LIFE PENDANT



This pendant is crafted from surgical stainless steel and holds cremated ashes. A 20" rolo style chain is included and the option to have a fingerprint, custom engraving, or laser etched photo available on the reverse side.

Crafted from nickel free 925 sterling silver. This piece includes an 18" silver box chain and fingerprint custom engraving on the pendant. 20" or 22" or a thicker 18", 20" or 22" chains are available as well as including a custom message, authentic signature, or laser etched photo.

## SILVER INDENTED HEART



## SILVER OVAL LOCKET



Made from nickel free 925 sterling silver. This piece includes an 18" silver box chain and fingerprint custom engraving, inside the locket holds two photos. 20" or 22" or a thicker 18", 20" or 22" chains are available as well as including a custom message, authentic signature, or laser etched photo.

# ALBA ROSE ASHES JEWELLERY

---

When a loved one passes, their memory lives on. Keep them close by enclosing their ashes within luxurious Italian Murano glass and set into stunning cremation jewellery. Each piece is unique and beautifully subtle, hand crafted by our skilled team of glass and goldsmiths.

These are just a selection of the keepsakes available.

Alba Rose Ashes jewellery is hand crafted by a skilled team of glass and goldsmiths who create bespoke jewellery enclosing ashes from your loved one within Italian Murano glass and set into jewellery of your choice. The Momento Classic Ring is available in 9kt or 18kt yellow gold, 9kt or 18kt rose gold, platinum or sterling silver, and the glass stone at the centre can also be changed.

## MOMENTO CLASSIC RING



## CHARM



The Alba Rose Charm is available in 9kt or 18kt yellow gold, 9kt or 18kt rose gold, platinum or sterling silver, and the glass stone which contains the ashes from your loved one can also be changed. Engraving is also available.

The Alba Rose Always Earrings are available in 9kt or 18kt yellow gold, 9kt or 18kt rose gold, platinum or sterling silver, and the glass stone at the centre, contain the ashes from your loved one, can be changed to a jewel of your choice. The accent stones available are in a choice of swarovski or diamond with this piece of jewellery.

## ALWAYS EARRINGS



# CRYSTAL MEMORIALS

---

Beautiful memorial crystal keepsakes which holds a segment of cremation ashes or a lock of precious hair, to keep and treasure forever

These are just a selection of the keepsakes available.

## CRYSTAL BUTTERFLY



The Crystal Memorials butterfly is made from Swarovski crystal, is available in either silver or gold.

The Crystal Memorials heart can hold the ashes or lock of hair from your loved one in its centre, the custom box can also be engraved.

## CRYSTAL HEART



## CRYSTAL TEALIGHT



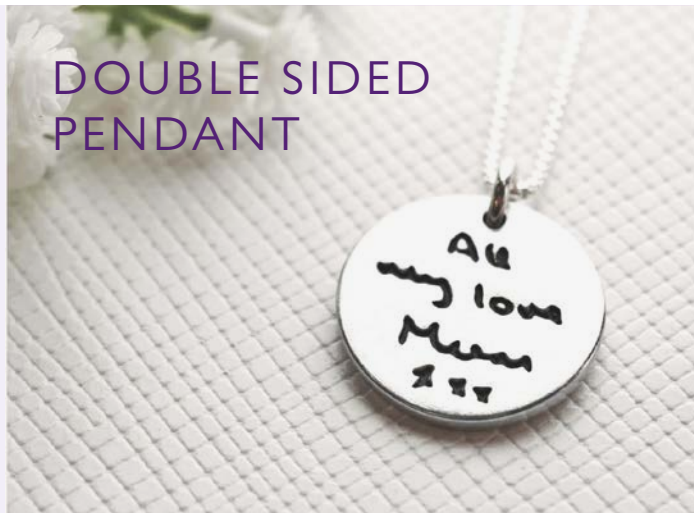
The Crystal Memorials tea light is made with Swarovski crystal, is available in a variety of colours and can be engraved.

# MEMORY TREASURES

---

A selection of bespoke fingerprint, hand and foot print or writing and drawing jewellery pendants made to be placed onto a chosen necklace, bracelet or cufflinks.

## DOUBLE SIDED PENDANT



A silver Original Fingerprint pendant, capturing the unique swirls of a fingerprint on one side and a personal message on the other, finished off with a sterling silver, fine silver link chain.

A sterling silver charm carrier that fits Pandora bracelets. Our Memory Treasures handprint and footprint charms are the perfect way to capture those little prints. This item captures the detail and shape of hands and footprints in silver.

## HANDPRINT CHARM



## TENDER TOUCH CHARM



Our Memory Treasures Tender Touch range is textured with the unique fingerprint of your loved one. The subtle abstract use of your loved one's fingerprint whorls make any item from this range a uniquely artistic keepsake.



# MEMORY BOOKS

---

A memory or condolence book is a lovely way to capture memories of a loved one and makes a wonderful keepsake for the family to treasure. These beautiful Memory Books are carefully made by hand in the UK and feature artist-quality cartridge paper and embossed hard-backed covers with a cotton ribbon bow.

These are just a selection of the keepsakes available.

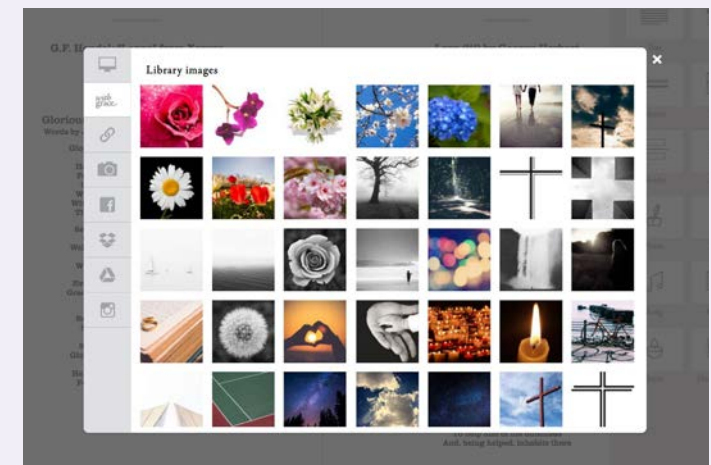
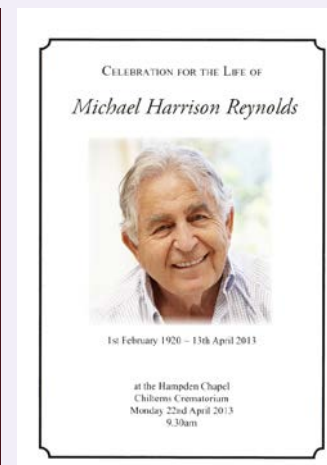
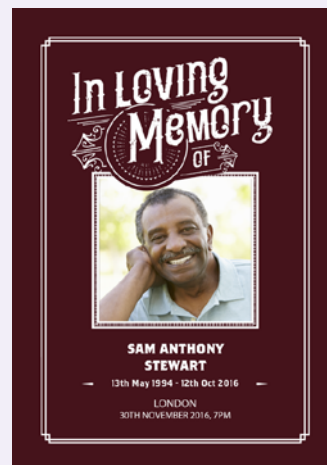


Available as a ring-bound hard back or linen-covered with silver 'In Loving Memory' wording on the cover.



# MEMORIAL STATIONERY

This double-sided concertina-fold memento, filled with beautiful images and meaningful words, commemorate the most treasured moments in a life well lived.





# IN MEMORY PINS

---

An elegant memento, for you, your family and your friends. Each lapel pin comes in an individual, elegant drawstring voile pouch. There are many different designs to choose from (minimum order of ten pins).



# MEMORIAL EVENTS

---

We can organise a funeral in a beautiful location for your immediate family to attend with a post-funeral gathering, with food and refreshments all on the same site.





# THE ETERNITY TREE

---

What better way to create a lasting memorial than by planting a small sapling that can absorb the goodness from the ashes, creating a truly living memorial to your loved one.

Creating the world's first bio-neutralising urn, The Eternity Tree has developed an urn that, when planted into the ground, produces a rich and vibrant compost that is capable of being absorbed into a growing sapling or bushes roots. The urn is of a similar capacity to all other urns, meaning all remains can be deposited. The process takes approximately six months for the urn to fully degrade and the sapling or bush to start growing.





# URNS AND ASHES CASKETS

---

Following a cremation, you have the choice of scattering ashes in a special place, interring at a church or cemetery, or holding on to them as a lasting memory of your loved one.

Those who prefer to hold on to remains often wish to have a fitting container. We offer a selection of handcrafted, artisanal urns and caskets for ashes.



# THE ASHES BIER

---

Perfect for holding memorial services to inter ashes, the bier provides an enhanced way of carrying the ashes into a funeral venue, displaying them in our visiting room and during a ceremony.

The sedan section can be used separately to transport an ashes casket on a hearse, enabling you to have a cortege to the funeral ceremony.

The carrying handles allow members of the family (or our own team) to carry the ashes into the ceremony and to the graveside.





[www.cpjfield.co.uk](http://www.cpjfield.co.uk)



**C.P.J. Field.**

More than a funeral director since 1690.

